

manipalhospitals
LIFE'S ON

Manipal Hospital Yelahanka



Precision is the New Standard.

Scan to chat with
MAI - 24
Digital Doctor



Manipal Hospital Yelahanka
in association with
Bangalore Society of Obstetrics & Gynecology
Organizes a CME & Panel Discussion

Advances in the Management of Endometrial Cancer

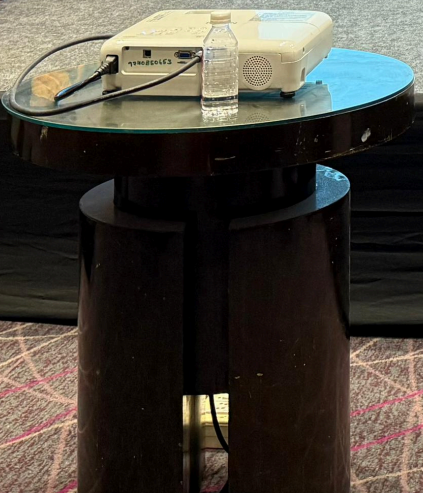
Time	Session	Topic	Speaker
10:30 AM	Registration		
10:45 AM	Introduction	Introduction of the Session	Dr. Jayaramiah Das
11:00 AM	Discussion	Discussion on: Genetics, Risk & Dr. Das	Dr. Jayaramiah Das
11:15 AM	Session	Update on Epidemiology & Clinical Presentation of Endometrial Cancer	Dr. Prasad Narayana
11:30 AM	Session	Endometrial Cancer	Dr. Jayaramiah Das
11:45 AM	Session	Update on Risk-Adapted Management of Endometrial Cancer	Dr. Jayaramiah Das
12:00 PM	Session	Latest Molecular Techniques	Dr. Jayaramiah Das
12:15 PM	Session	Advances in Immunotherapy	Dr. Jayaramiah Das
12:30 PM	Panel Discussion	Panel Discussion on GAI	Dr. Jayaramiah Das Dr. Prasad Narayana Dr. Anand Narayana Dr. Anand Narayana Dr. Anand Narayana Dr. Anand Narayana
1:00 PM	Vote of Thanks		
1:30 PM			

22nd February 2024, Friday | 10:30 am to 1:30 pm
Manipal Hospital, Yelahanka Road, Bangalore
Dr. Jayaramiah Das | Dr. Prasad Narayana | Dr. Anand Narayana | Dr. Anand Narayana | Dr. Anand Narayana

A multidisciplinary dialogue on risk-adapted, molecular-driven endometrial cancer.

manipalhospitals
MANIPAL HOSPITAL YELAHANKA
SERVICES NOW OPEN

BSOG



Manipal Hospital Yelahanka



the
rd.



A multidisciplinary
dialogue on risk-
molecular-dr
metrial can



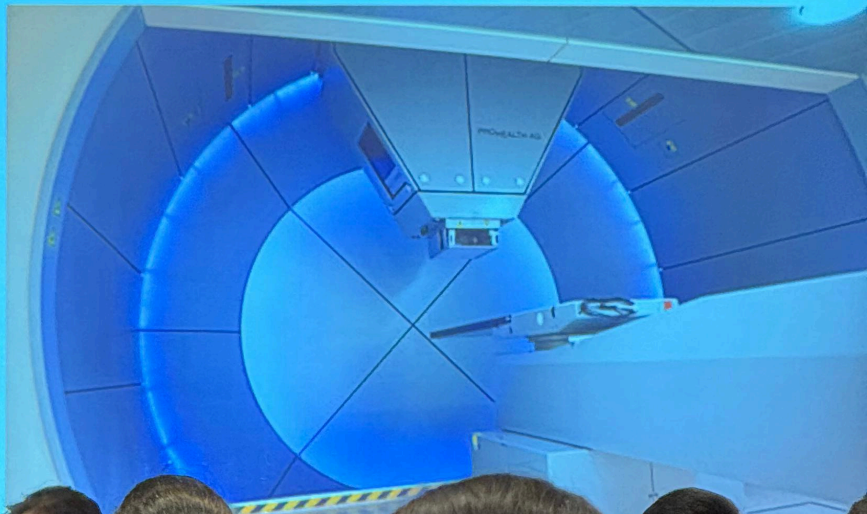


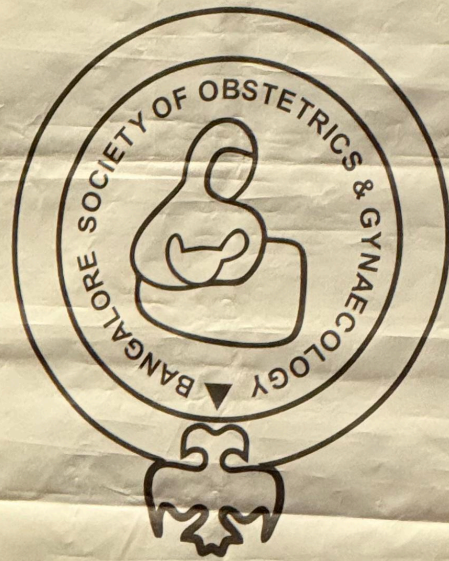
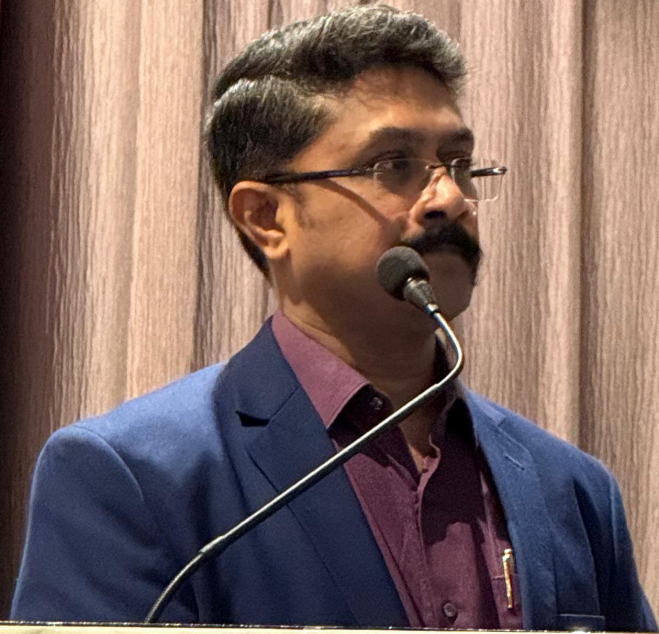
Manipalhospitals
LIFE'S ON

Manipal Hospital Yelahanka

Precision is the
New Standard.

Proton beam therapy





BSOG

manipalhospitals
LIFE'S ON IT

Manipal Hospital Yelahanka

Precision is the
New Standard.

A multi-disciplinary
approach to patient care.



a

manipal
hospitals
LIFE'S ON II



RDANCE?



A multidisciplinary dialogue on risk-adapted, molecular-driven endometrial cancer



manipalhospitals
LIFE'S ON

Manipal Hospital Yelahanka

Precision is the New Standard.

Scan to chat
MAI - 24/7
Digital Doctor



A multidisciplinary
dialogue on risk-averse
management

manipalhospitals
MANIPAL HOSPITAL
YELAHANKA
SERVICES NOW OPEN



**A multidisciplinary
dialogue on risk-adapted,
molecular-driven
endometrial cancer care.**

manipalhospitals
LIFE CARE



**MANIPAL HOSPITAL
YELAHANKA**

SERVICES NOW OPEN



manipalhospitals
LIFE'S ON

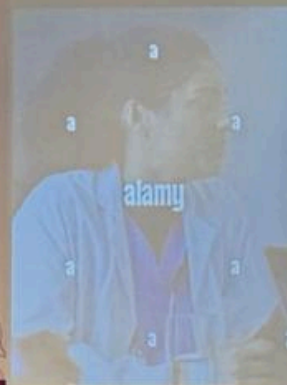
Manipal Hospital Yelahanka



Precision is the New Standard.



Scan to chat with
MAI - 24/7
Digital Doctor



Takeaway Message

Anatomy tells where; Molecular profile tells how.

- Test Every Patient
Universal molecular profiling is now standard of care
- Individualise Care
Tailor treatment intensity to biological risk, not just anatomic extent
- De-escalate POLEmut, Escalate p53abn
Precision medicine means right treatment for right patient

A multidisciplinary dialogue on risk-adapted, molecular-driven endometrial cancer care.

manipalhospitals
MANIPAL HOSPITAL
YELAHANKA
SERVICES NOW

